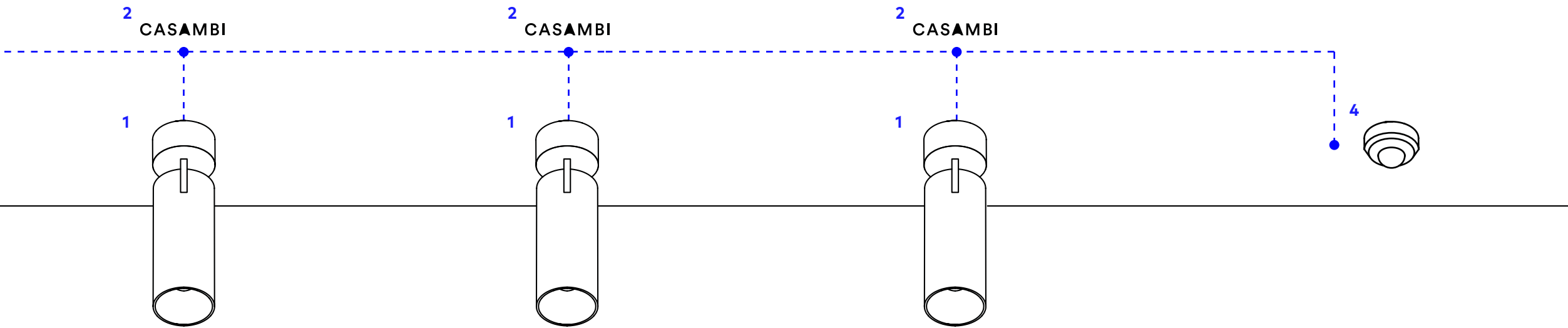


Bluetooth Smart Lighting

Integration Guide

Bluetooth Smart Controls



Components

Our Bluetooth Smart Lighting network is made up of four types of components: luminaires, drivers, a control interface and sensors (optional).

1. Luminaires

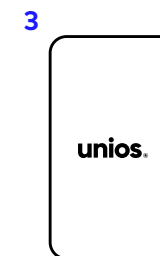
In addition to having dimming capabilities as expected from a standard dimmable light, Casambi enabled luminaires also relay messages to other luminaires in the mesh network, increasing its range significantly.

2. Drivers

Select from either an built-in or remote bluetooth wireless module. A built-in Tridonic solution provides simpler installation and superior range while a remote solution can be more cost effective and allows for retrofitting.

3. Control Interface

The Casambi app is utilised as the main HUB to control your lighting configuration. The network will continue to operate even when there are no phones nearby running the Casambi app.

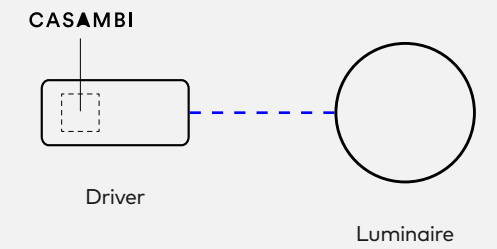


4. Sensors (optional)

Sensors are optional and can be configured to activate lights, trigger scenes via motion detection, or automatically dim lights in response to available natural daylight for energy savings.

Tridonic basicDIM or Remote Casambi unit?

Our Bluetooth Smart Lighting Solution can be added to Unios products through the use of a Tridonic basicDIM wireless driver or a remote Casambi module. With each one having its own advantages, see which of the two options would be most suited for your project.

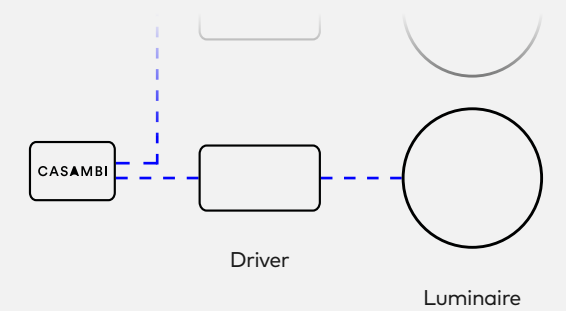


Tridonic basicDIM Wireless Driver (with built-in Casambi)

Allowance for one driver to one luminaire

Convenience of a simpler installation

Superior strength and range of a mesh network



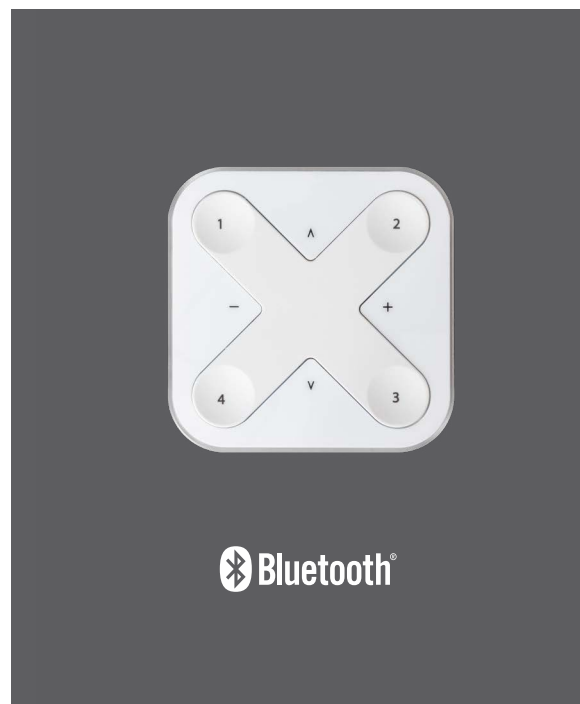
Remote Casambi Unit (with Unios Driver)

Allowance for one unit to one driver

Optionally connect multiple luminaires with trailing edge dimming to a single unit for cost savings (CBU-TED only)

Potential to retrofit existing installations with bluetooth

Compatible with RGB, RGBW or tunable white technology



Casambi Xpress Switch

The Casambi units allow users to integrate Bluetooth technology to an existing setup. To get started, choose a suitable dimmer and download the Casambi app or pair an Xpress Switch for a magnetically mounted remote control.

CBU-TED

The CBU-TED is a Bluetooth Controllable Dimmer suitable for our phase-cut dimmable products and drivers.

CBU-ASD

The CBU-ASD is a Bluetooth Controllable 1-10V Dimmer and DALI universe suitable for applications where either DALI or analogue dim is required.

CBU-PWM4

The CBU-PWM4 is a Bluetooth Controllable 4 Channel Dimmer is best suited for our range of Eclipse and Aeon Flex linear lights.

Casambi Phone App

An Android or iOS app for the easiest way to configure and control your bluetooth enabled lights.

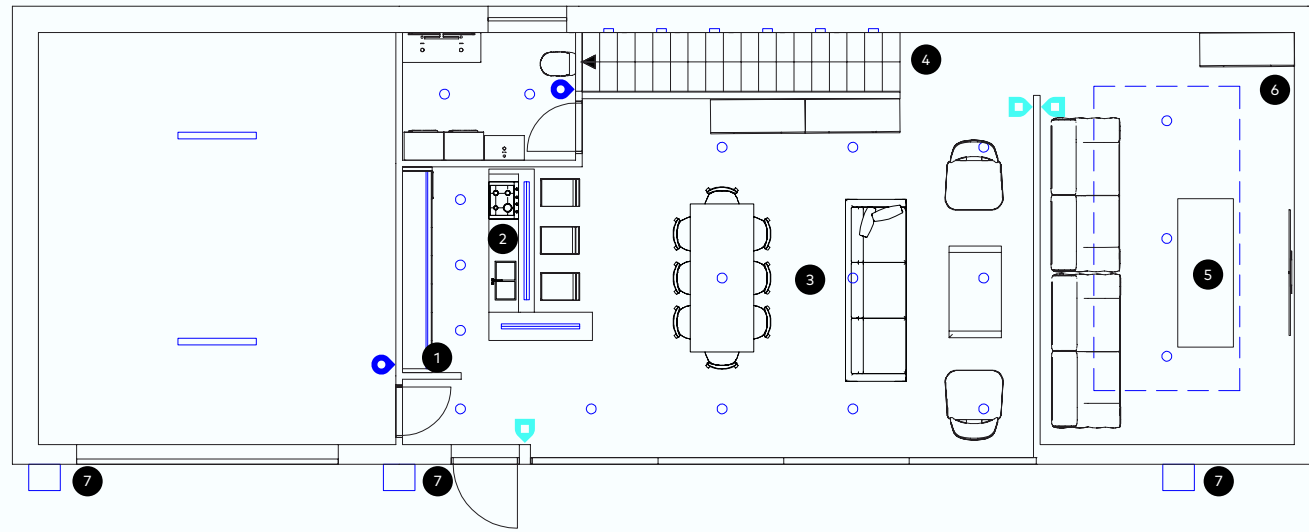
Xpress Switch

The Xpress Switch is a battery operated wireless remote control. Its magnetic mount can be fixed on a wall to provide an alternative to the Casambi app.

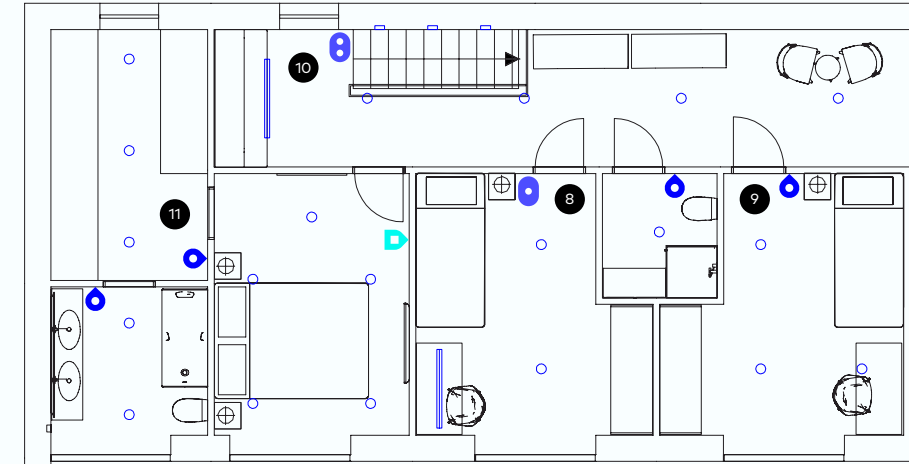






Residential Application (Example)

Ground Floor



First Floor



-  Casambi Xpress Switch
-  On/Off Light Switch
-  1 Button Pushbutton Switch
-  2 Button Pushbutton Switch

1 Overhead Cupboard Lighting

Luminaire: Eclipse G2 Strip in Glide Recessed Extrusion

Driver: Tridonic basicDIM Wireless 24V Driver

Casambi: Built-in to driver

Control: Xpress Switch / Casambi App

Light up a kitchen bench independent from general kitchen lighting for ambient evening light. Use a basicDIM driver for seamless dimming without the use of an additional Casambi module.

3 Dining / Living Areas

Luminaire: Apex Downlight

Driver: Unios Remote G2 Phase-Cut Dimmable Driver

Casambi: CBU-TED

Control: Xpress Switch / Casambi App

All downlights in this area are controlled as one group coming in under the 150W power limit of each CBU-TED module. For individual flexible control of each downlight, use Tridonic basicDIM Wireless drivers. An additional Xpress Switch is located on the far side for the equivalent of 2-way control while providing controls for the stairway lighting.

5 Theatre Room

Luminaire: Titanium Downlight

Driver: Unios Remote G2 Phase-Cut Dimmable Driver

Casambi: CBU-TED

Control: Xpress Switch / Casambi App

A perfect example of where pre-configured scenes are applied. Using a single CBU-TED to dim all three downlights, scenes can be configured for varying light levels. The magnetically mounted Xpress Switch can be removed from its bracket and taken to the seating area to easily dim down the lights for movie time. Configurable delays and fadeout times allow for that true movie theatre experience.

2 Kitchen Area

Luminaire: Arrow Suspended Linear / Apex Downlight

Driver: Unios G2 Phase-Cut Dimmable Driver

Casambi: CBU-TED

Control: Xpress Switch / Casambi App

Control all kitchen lighting together as a single dimming group for a cost effective solution. Use additional CBU-TED modules if more switching groups are required.

4 Stairway

Luminaire: Cuadro Recessed Wall Light

Driver: Tridonic basicDIM Wireless 24V Driver

Casambi: Built-in to driver

Control: Xpress Switch / Timer / Casambi App

The 24V DC powered recessed wall lights illuminating the stairs are powered from a basicDIM driver. The stairway lighting can be configured via a timer to be illuminated at full brightness during the early evening and dimmed down before turning off in the late evening. Manual control is always available via the Xpress Switch or via the Casambi app.

6 RGBW Cove Feature

Luminaire: Eclipse G2 Strip in Glide Surface Extrusion

Driver: Unios 24V Non-Dimmable Driver

Casambi: CBU-PWM4

Control: Xpress Switch / Casambi App

The CBU-PWM4 module turns any standard non-dim 24V driver into a 4-channel dimmer for LED strip. The Casambi application can transparently utilise these four channels to control each of the Red, Green, Blue and White LEDs in the Eclipse strip to create any colour mix. Create continuously looping animations with the application, or manually select the perfect colour using the palette control feature and slider controls.

7 Exterior Facade

Luminaire: Marc Wall Light

Driver: Built-in Phase-Cut Driver

Casambi: CBU-TED

Control: Xpress Switch / Timer / Casambi App

Wireless bluetooth control doesn't have to be limited to indoor areas. Utilise the smart timer features of the Casambi solution to automatically turn exterior lights on and off during the evening. As always, manual control is easily accessible through an Xpress Switch or using the Casambi application.

9 Bedroom with SmartSwitch Dimming

Luminaire: Apex Downlight

Driver: Unios Remote G2 Phase-Cut Dimmable Driver

Casambi: CBU-TED

Control: Standard SmartSwitch / Casambi App

SmartSwitch can also be used with normal on/off light switches allowing for it to be integrated into existing installations. This feature can be configured for basic dimming through an easy procedure. Simply flick the switch off then on again and the lights will begin to increase in brightness. When the desired lighting level is reached, simply flick the switch off then on again to fix the light level in place. For fine tuning of dimming levels, the lights can always still be controlled via the app as long as the light switch is on.

11 Mix & Match with Standard Switching

Luminaire: Mixed

Driver: Mixed

Casambi: Mixed

Control: Mixed

The range of Bluetooth wireless control products offered means the level of integration can scale to meet any budget and operational requirements. Any spaces that have simple switching requirements can still be installed using traditional wiring methods. Where wireless control is desired, mix and match between Casambi modules and Casambi-enabled drivers to suit the granularity of zoning required.

8 Bedroom with SmartSwitch Scenes

Luminaire: Arrow Suspended Linear / Apex Downlight

Driver: Unios G2 Phase-Cut Dimmable Driver

Casambi: 2x CBU-TED

Control: Pushbutton SmartSwitch / Casambi App

The CBU-TED module has a built-in feature called SmartSwitch. Momentarily turning the power off and back on again triggers a configurable function such as changing scenes. Using any standard pushbutton switch allows for a quick press to change between all on, table light only, all off, or any other custom scene required. It also means the Casambi modules are always powered on even when the lights are off, ready for control via the app when needed. This configuration is best used in simple room designs with one or two zones of lighting. For rooms with a single zone, two scenes can be configured for 100% and 20% dimming, to enable quick single press switching to a more ambient lighting level.

10 Corridor & Study Nook

Luminaire: Arrow Suspended Linear / Apex Downlight

Driver: Unios G2 Phase-Cut Dimmable Driver

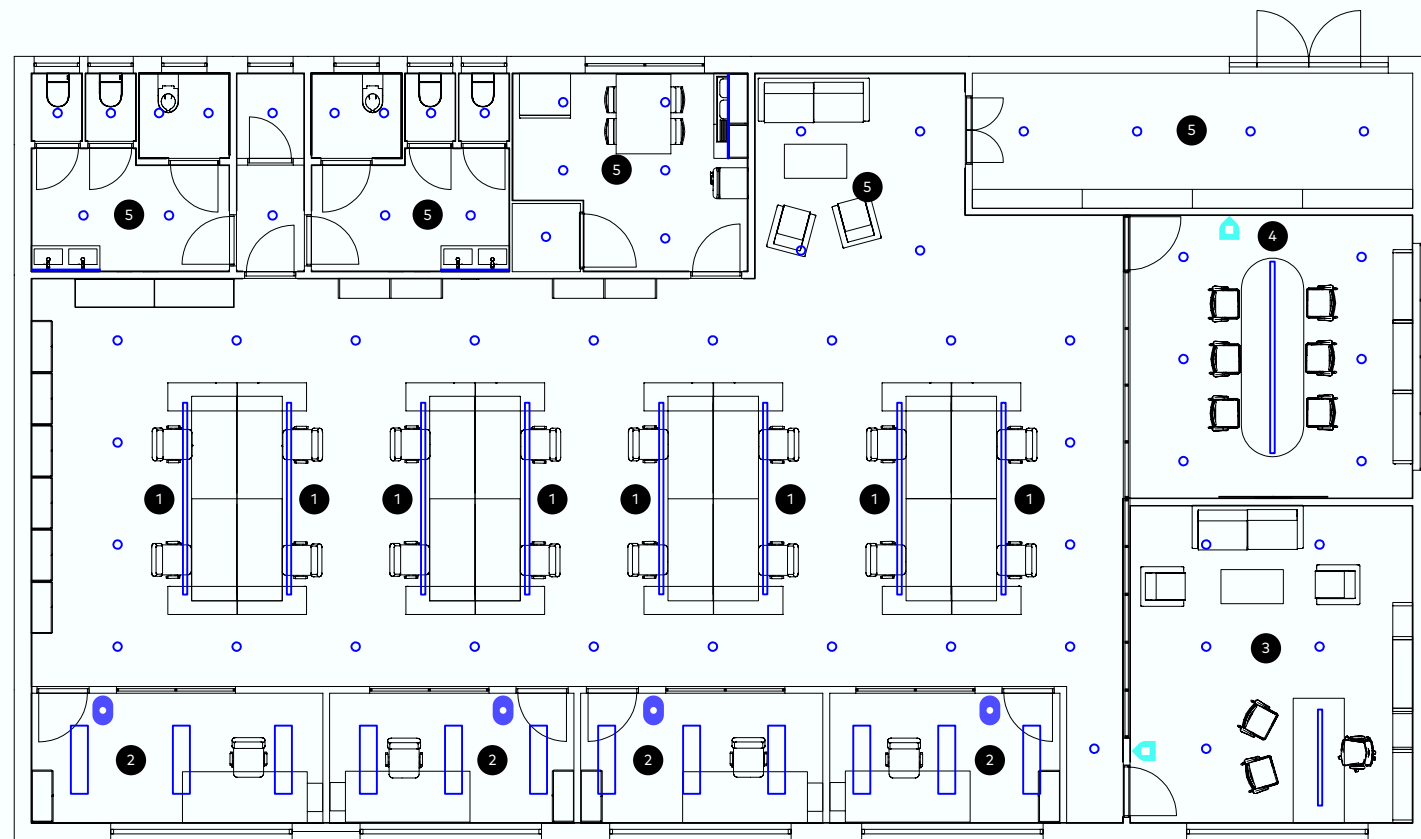
Casambi: 2x CBU-TED

Control: Pushbutton SmartSwitch / Casambi App

Split into two groups using a pair of trailing edge dimmer modules, the corridor downlights and the linear light above the study nook can be dimmed independently. The twin pushbutton wall plate activates the stairway lighting or both zones in the upstairs corridor. When sitting down at the study nook, the Casambi app can be used to turn on the linear light by itself, or set a dimming level suitable for the task at hand. For more flexible control, such as only having the downlight near the window seating area turned on, use a basicDIM Wireless driver for each downlight instead of a CBU-TED module. This allows for independent operation of each light to allow for endless scene configurations.

Office Application (Example)

- ▶ Casambi Xpress Switch
- On/Off Light Switch
- 1 Button Pushbutton Switch



1 Open Plan (Casambi App Controlled)

Luminaire: 2x LX S78 Suspended Linear Light (forming a continuous length of 3380mm)

Driver: 1-10V Analog Dim Driver

Casambi: 2x CBU-ASD (set to 1-10V output)

Control: Casambi App / Timer

Each module controls one half of the full linear length allowing for individual dimming control per workstation. Users can quickly connect and change dimming levels using their personal smartphone device to suit their current working requirements. The Casambi network can be configured with a timer to turn the lights on before employees typically arrive and off again once all employees have left. Lighting is essentially automated without needing the application during the day. The Casambi application is only needed to adjust light levels or turn lights on after-hours. An Xpress Switch for the entire open plan office can be installed to manually activate lights after hours if required.

2 Standard Office (with SmartSwitch)

Luminaire: Diamond G2 Panel Light

Driver: Tridonic basicDIM Wireless Driver

Casambi: Built-in to driver

Control: SmartSwitch / Casambi App

Utilising a basicDIM driver with each panel light allows for ultimate flexibility. Configure a scene with the lights over the desk or only for energy savings, or configure preset dimming levels for each light as needed. Utilising a standard rocker-style light switch allows for basic dimming control using Casambi SmartSwitch functionality. Simply turn the switch off and on in quick succession to begin ramping up the brightness. Repeat the off and on procedure once the desired dimming level is reached to fix the lighting level in place. Alternatively, use a push-button bell-press style switch and the same SmartSwitch functionality to cycle through custom scenes, including a fully off state. Basic dimming all without requiring the use of an Xpress Switch or using a smartphone. Advanced dimming and control can still be achieved through the Casambi application when necessary.

3 Premium Office (with Xpress Switch)

Luminaire: LX S78 Suspended Linear Light (1690mm) / Titanium Downlight

Driver: 1-10V Analog Dim Driver / Unios G2 Phase-Cut Dimmable Driver

Casambi: CBU-ASD (set to 1-10V output) / CBU-TED

Control: Xpress Switch / Casambi App

The Xpress Switch brings easier and convenient control to this larger office space. The lighting is split into two control groups: downlights and suspended linear. Depending on the use of the space at the time, either or both groups can be turned on. Each group can also be independently dimmed to suit the scene requirements. The Xpress Switch buttons can be configured in many different ways. This example might have the following functions assigned: All On, All Off, Linear Only, Downlights Only. The Xpress switch also has dedicated buttons for adjusting dimming levels as well. Note that the 5 downlights cannot be individually controlled in this example. If this flexibility is required and budgets allow, simply option each downlight with a basicDIM driver instead of using the Phase-Cut driver and dimmer module combination.

4 Meeting Room (with Xpress Switch)

Luminaire: LX S78 Direct and Indirect Suspended Linear Light / Titanium Semi-Recessed Downlight

Driver: 1-10V Analog Dim Driver / Tridonic basicDIM Wireless Driver

Casambi: 2x CBU-ASD / Built-in to Tridonic driver

Control: Xpress Switch / Casambi App

Two modules in the LX linear allows for independent control of the downwards and upwards lighting components for flexible scene arrangements. A Tridonic basicDIM driver for each downlight means that they can be controlled individually allowing for the downlights closest to the LCD screen to be switched off during presentations. The battery operated Xpress Switch can be removed from its magnetic cradle and used anywhere in the room to adjust lighting during a meeting or presentation. As the magnetic cradle requires no power cabling, it can be mounted to any surface, even glass.

5 Mix & Match with Standard Switching

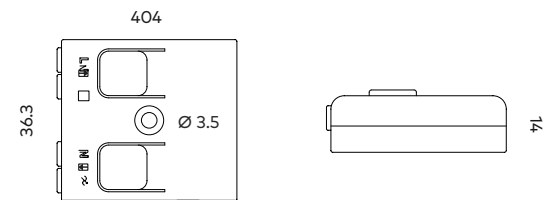
Luminaire: Mixed

Driver: Mixed

Casambi: Mixed

Control: Mixed

For areas of the building where flexible lighting control isn't as critical, traditional methods of lighting control can still be used alongside the Bluetooth solution. Back of house, corridor and entrance lighting can be controlled via standard motion detectors or time clocks. However, if a full Bluetooth solution is installed and Casambi-enabled motion detectors are used, making any changes to time schedules, detector timeouts and run times is as simple as opening up the Casambi application.



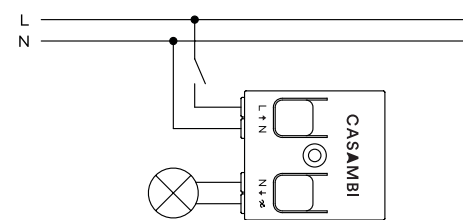
All measurements are based in millimetres

Suitable for one or more of our phase-cut compatible products (up to 150W)

Use a CBU-TED per product if individual control is desired

Wiring Diagram

0.5-1.5mm²/16-20AWG solid and stranded
Strip length 6-8mm



Connection Range¹ 50m (Outdoor), up to 30m (Indoor)
Each unit acts as a repeater through mesh network technology. Longer ranges can be achieved by using multiple Casambi units.

¹Range is highly dependant on the surrounding and obstacles, such as walls and building materials.

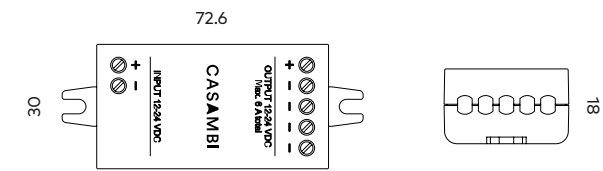
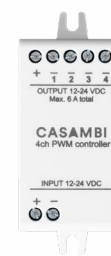
Input	
Voltage Range	85-240VAC
Frequency	50-60Hz
Max Mains Current	0.65A
No-Load Standby Power	< 0.3W

Output	
Dimming Method	Trailing-Edge phase control
Max Output Power	150VA at 230VAC 75VA at 120VAC
Max Output Current	0.65A
Min Load Requirements	1W
Max Inrush Current	10A, 100ms

Operating Conditions	
Ambient temperature, ta	-20.....+45°C
Max. Case Temperature, tc	+75°C
Storage Temperature	-25.....+75°C
Max. Relative Humidity	0.....80%, non-cond.

Connectors	
Wire Range, Solid & Stranded	0.5-1.5mm ² 16-20AWG
Wire Strip Length	6-7mm

Mechanical Data	
Dimensions	40.4 x 36.3 x 14.0mm
Weight	15g
Degree of Protection	IP20 (indoor use only)



All measurements are based in millimetres

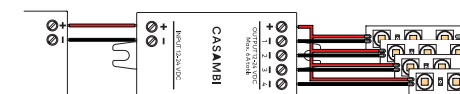
To be used with our range of compatible 24V DC products

Can be used to control up to 4 individually wired groups of products

Channels can be combined to control tunable white, RGB and RGBW

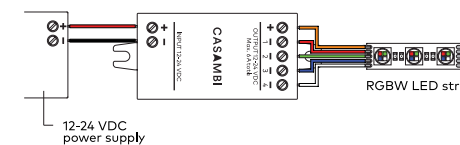
Wiring Diagram (1-4 Separate Channels)

+: Common (+) 1: Channel 1 (-) 2: Channel 2 (-)
3: Channel 3 (-) 4: Channel 4 (-)



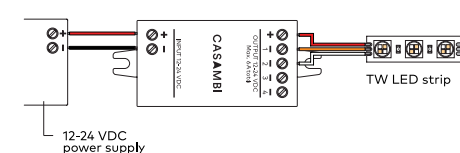
Wiring Diagram (RGBW)

+: Common (+) 1: Red (-) 2: Green (-)
3: Blue (-) 4: White (-)



Wiring Diagram (Tunable White)

+: Common (+) 1: Warm (-) 2: Cool (-)
3: N/A 4: N/A



Connection Range¹ 50m (Outdoor), up to 30m (Indoor)
Each unit acts as a repeater through mesh network technology. Longer ranges can be achieved by using multiple Casambi units.

¹Range is highly dependant on the surrounding and obstacles, such as walls and building materials.

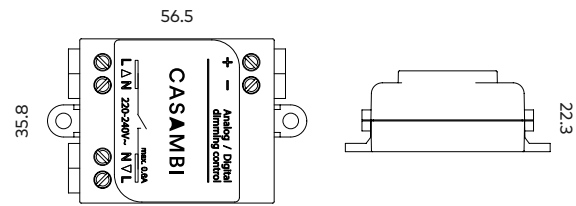
Input	
Voltage Range	12-24VDC
Max. Input Current	6A
No-Load Standby Power	< 0.3W

Output	
Output Voltage	12-24 VDC
Max. Output Power	144W at 24VDC 72W at 12VDC
Max. Output Current	6 A (can be freely divided between the channels)
Min. Load Requirement	0W
Dimming Method	Pulse Width Modulation (PWM)

Operating Conditions	
Ambient temperature, ta	-20.....+45°C
Max. Case Temperature, tc	+75°C
Storage Temperature	-25.....+75°C
Max. Relative Humidity	0.....80%, non-cond.

Connectors	
Wire range, solid & Stranded	0.75-1.5mm ² 14-22AWG
Wire Strip Length	6-7mm
Tightening Torque	0.4Nm
Max. Input Cable Length	3m

Mechanical Data	
Dimensions	72.6 x 30.0 x 18.0mm
Weight	23g
Degree of Protection	IP20

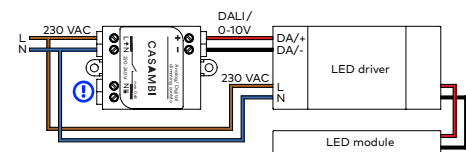


All measurements are based in millimetres

To be used with a single DALI driver or 1-10V driver

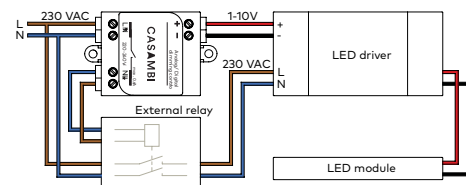
Wiring Diagram (Directly powered DALI or 1-10V)

Suitable for drivers that can be switched off via control interface



Wiring Diagram (1-10V through external relay)

Suitable for drivers that cannot be switched off via control interface



Risk of Fire
Do not connect CBU-ASD mains output directly to LED driver mains input

Connection Range¹ 50m (Outdoor), up to 30m (Indoor)

Each unit acts as a repeater through mesh network technology. Longer ranges can be achieved by using multiple Casambi units.

¹Range is highly dependant on the surrounding and obstacles, such as walls and building materials.

Input	
Voltage Range	220-240VAC
Frequency	50Hz
Max Mains Current	0.6A

Main Output	
Output Relay	SSR on phase line
Voltage Range	220-240VAC
Frequency	50Hz

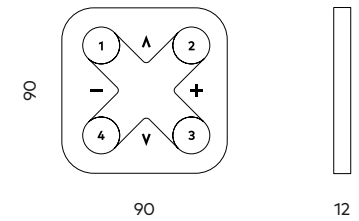
0-10V Output	
Voltage Range	0-10VDC
Max. Drivers Connected	1

DALI Output	
Voltage Range	9-12VDC
Max. Drivers Connected	1

Operating Conditions	
Ambient temperature, ta	-20.....+50°C (Iout 0 A) -20.....+40°C (Iout 0.6 A)
Max. Case Temperature, tc	+70°C
Storage Temperature	-25.....+75°C
Max. Relative Humidity	0.....80%, non-cond.

Connectors	
Wire range, solid & Stranded	0.75-1.5mm ² 14-22AWG
Wire Strip Length	6-7mm
Tightening Torque	0.4Nm/4Kgf.cm/2.6Lb-In

Mechanical Data	
Dimensions	56.5 x 35.8 x 22.3mm
Weight	48g
Degree of Protection	IP20 (indoor use only)
Protection Class	Built-in Class II



All measurements are based in millimetres

Can be used as a light switch replacement

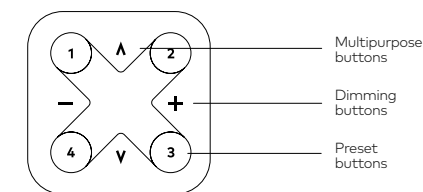
Magnetically mounted to wall bracket and can be removed for portable use

Can be used to select scenes, dim lights and change colour temperatures for tunable white luminaires.

Battery operated with 2-5 year lifetime

Basic Functions

The preset buttons for the Xpress switch can be configured through the Casambi App. A light indicates the selected preset. See the different function possibilities for each button below:



Multipurpose Buttons

1. Change of colour temperature in steps of 25 Kelvin.
2. Change of the indirect/direct ratio

Dimming Buttons

Smooth dimming of last chosen preset.

Preset Buttons

1. Individual luminaire control
2. Group control
3. Control of all lamps
4. Recall scenes
5. Recall animations

Connection Range 50m in open air

Finishes

Black	
White	

General Specification

Battery (Included)	CR2430 Lithium Coin Cell
Battery Lifetime	2-5 years (depending on usage)

Casambi Bluetooth Compatibility

Product Series & Driver	CBU-TED / BTPC0001	CBU-ASD / BTDA0001	CBU-PWM4 / BTPW0001	Built-In	Notes
CEILING					
Akira Ceiling Series					
Built-in Unios PC Driver	✓				
Remote Tridonic One4All DALI Driver		✓			
Remote Tridonic basicDIM Driver				✓	
Apex Downlight Series					
Remote Unios G1/G2 PC Driver	✓				
Remote Tridonic One4All DALI Driver		✓			
Remote Tridonic basicDIM Driver				✓	
Axis Surface Mounted Downlight					
Built-in Unios PC Driver	✓				
Remote Tridonic One4All DALI Driver		✓			
Remote Tridonic basicDIM Driver				✓	
Diamond G2 Panel Series					
Remote Non-Dim Driver					<i>Standard Diamond Panel Driver is non-dim</i>
Remote Unios G1/G2 PC Driver	✓				
Remote Tridonic One4All DALI Driver		✓			
Remote Tridonic basicDIM Driver				✓	<i>For 1200x600 size - available up to 40W/1000mA power level only</i>
Kinetic Surface Mounted Downlight					
Built-in Unios PC Driver	✓				
Remote Tridonic One4All DALI Driver		✓			
Remote Tridonic basicDIM Driver				✓	
Kobe Spotlight Series					
Built-in Unios PC Driver	✓				
Remote Tridonic One4All DALI Driver		✓			
Remote Tridonic basicDIM Driver				✓	
Particle Downlight Series					
Remote Unios Non-Dim Driver (Micro)					<i>Micro requires remote Osram DALI driver for Casambi dimming</i>
Remote Unios G1/G2 PC Driver (Small/Medium/Large)	✓				
Remote Tridonic One4All / Osram DALI Driver		✓			
Remote Tridonic basicDIM Driver (Small/Medium/Large)				✓	
Portal Pendant Series					
Built-in Analogue 1-10V Dim Driver		✓			<i>Can be installed within canopy kit</i>
Built-in 24V Driver (Tuneable White only)			✓		<i>Comes installed within canopy kit</i>
Quantum Downlight Series					
Remote Unios G1/G2 PC Driver	✓				
Remote Tridonic One4All DALI Driver		✓			
Remote Tridonic basicDIM Driver				✓	
Scope Spotlight Series					
Remote Unios Non-Dim Driver (RE40/SM40/SR40)					<i>XX40 sizes require remote Osram DALI driver for Casambi dimming</i>
Remote Unios G1/G2 PC Driver (RE60/SM60/SR60)	✓				
Remote Tridonic One4All / Osram DALI Driver		✓			
Remote Tridonic basicDIM Driver (RE60/SM60/SR60)				✓	
Shift Downlight Series					
Remote Unios G1/G2 PC Driver	✓				
Remote Tridonic One4All DALI Driver		✓			
Remote Tridonic basicDIM Driver				✓	

Recommended 240V option for maximum control flexibility and installation. Recommended 24V DC options for maximum control flexibility and RGB(W) products.

Product Series & Driver	CBU-TED / BTPC0001	CBU-ASD / BTDA0001	CBU-PWM4 / BTPW0001	Built-In	Notes
Switch Downlight Series					
Remote Unios G1/G2 PC Driver	✓				
Remote Tridonic One4All DALI Driver		✓			
Remote Tridonic basicDIM Driver				✓	
Titanium Curve Downlight					
Remote Unios G1/G2 PC Driver	✓				
Remote Tridonic One4All DALI Driver		✓			
Remote Tridonic basicDIM Driver				✓	
Titanium G2 Downlight Series					
Remote Unios G1/G2 PC Driver	✓				
Remote Tridonic One4All DALI Driver		✓			
Remote Tridonic basicDIM Driver				✓	
Titanium G2 Surface Mounted Downlight					
Remote Unios G1/G2 PC Driver	✓				
Remote Tridonic One4All DALI Driver		✓			
Remote Tridonic basicDIM Driver				✓	
Titanium Semi Recessed Downlight					
Built-in 24V Non-Dim DC-DC Constant Current Driver					<i>DC-DC converter does not support dimming</i>
Remote Unios G1/G2 PC Driver (Small/Medium)	✓				
Remote Tridonic One4All / Osram DALI Driver		✓			<i>Micro can be paired with 240V Osram DALI driver for Casambi Control</i>
Remote Tridonic basicDIM Driver (Small/Medium)				✓	
Titanium Slotter Series					
Remote Unios G1/G2 PC Driver	✓				
Remote Tridonic One4All DALI Driver		✓			
Remote Tridonic basicDIM Driver				✓	
Titanium Starlight Series					
Remote Unios G1 PC Driver	✓				
Remote Osram DALI		✓			
TRACK					
Akira Track Light					
Built-in Unios PC Driver	✓				
Track Gearbox Tridonic One4All DALI		✓			
Track Gearbox Tridonic basicDIM Driver				✓	
Axis Track Light					
Built-in Unios PC Driver	✓				
Track Gearbox Tridonic One4All DALI		✓			<i>Available for 3-Circuit Track Only</i>
Track Gearbox Tridonic basicDIM Driver				✓	<i>Available for 3-Circuit Track Only</i>
FX 48V Track Series					
Built-in Unios Analogue 1-10V Dim Driver		✓			<i>Controls all lights on connected track sections as one group</i>
Built-in Tridonic DC-String DALI Driver		✓			<i>Can be configured to control four groups via DALI addressing</i>
Kobe Track Light Series					
Built-in Unios PC Driver	✓				
Track Gearbox Tridonic One4All DALI		✓			<i>Available for 3-Circuit Track Only</i>
Track Gearbox Tridonic basicDIM Driver				✓	<i>Available for 3-Circuit Track Only</i>
Scope Track Light					
Built-in Unios Non-Dim Driver (TR40)					<i>TR40 requires Track Gearbox Osram DALI driver for Casambi dimming</i>
Built-in Unios PC Driver (TR60)	✓				
Track Gearbox Tridonic One4All / Osram DALI		✓			
Track Gearbox Tridonic basicDIM Driver (TR60)				✓	

Casambi Bluetooth Compatibility

Product Series & Driver	CBU-TED / BTPC0001	CBU-ASD / BTDA0001	CBU-PWM4 / BTPW0001	Built-In	Notes
WALL					
Altair Wall Light					
Built-in Unios PC Driver	✓				
Remote Osram DALI		✓			
Astro Fixed One Wall Light					
Remote Tridonic basicDIM 24V Driver				✓	
Remote Non-Dim 24V Driver (CV2)			✓		4 control circuits possible per Casambi module
Remote PC 24V Driver (PC2)	✓				
Remote DALI / 1-10V 24V Driver		✓			
Astro Fixed Two Wall Light					
Built-in Unios PC Driver	✓				
Remote Tridonic One4All DALI Driver		✓			
Remote Tridonic basicDIM Driver				✓	
Athena Series					
Built-in Unios PC Driver	✓				
Remote Tridonic One4All DALI Driver		✓			
Remote Tridonic basicDIM Driver				✓	
Bianco Wall Light					
Built-in Unios PC Driver	✓				
Remote Osram DALI		✓			
Codex Reading Wall Light					
Built-in Unios Touch-dim Driver					Dimming touch button is integrated into the luminaire
Remote Osram DALI Driver		✓			Touch button on luminaire will no longer function
Cuadro Wall Light					
Remote Tridonic basicDIM 24V Driver				✓	
Remote Non-Dim 24V Driver (CV2)			✓		4 control circuits possible per Casambi module
Remote PC 24V Driver (PC2)	✓				
Remote DALI / 1-10V 24V Driver		✓			
Echo Wall Light					
Built-in Unios Non-Dim Driver					Standard Echo Wall Light Driver is non-dim
Remote Tridonic One4All DALI Driver		✓			
Remote Tridonic basicDIM Driver				✓	
Edge Wall Light					
Built-in Unios PC Driver	✓				
Remote Tridonic One4All DALI Driver		✓			
Remote Tridonic basicDIM Driver				✓	
Helix Wall Light					
Built-in Unios Non-Dim Driver					Standard Helix Wall Light Driver is non-dim
Remote Tridonic One4All / Osram DALI Driver		✓			
Remote Tridonic basicDIM Driver				✓	Single Arm requires 2+ wired in series for basicDIM drivers
Iris Wall Light					
Built-in Unios PC Driver	✓				
Built-in Tridonic One4All DALI Driver		✓			Driver is installed remotely for Iris Small
Built-in Tridonic basicDIM Driver				✓	Driver is installed remotely for Iris Small
Kepler Wall Series					
Built-in Unios PC Driver	✓				
Remote Osram DALI Driver		✓			
Remote Tridonic basicDIM Driver				✓	Fixed One requires 2+ wired in series for basicDIM drivers

Recommended 240V option for maximum control flexibility and installation. Recommended 24V DC options for maximum control flexibility and RGB(W) products.

Product Series & Driver	CBU-TED / BTPC0001	CBU-ASD / BTDA0001	CBU-PWM4 / BTPW0001	Built-In	Notes
Kepler Spotlight					
Built-in Unios PC Driver	✓				
Remote Osram DALI Driver		✓			
Remote Tridonic basicDIM Driver				✓	Requires 2+ wired in series for basicDIM drivers
Link Wall Light					
Built-in 24V 3-Step DC-DC Constant Current Driver					DC-DC converter does not support external dimming
Marc Wall Light					
Built-in Unios PC Driver	✓				
Remote Tridonic One4All DALI Driver		✓			
Remote Tridonic basicDIM Driver				✓	
Moonstone Wall Light					
Built-in Unios PC Driver	✓				
Remote Osram DALI		✓			
Onyx Spotlight Series					
Built-in Unios PC Driver	✓				
Remote Tridonic One4All / Osram DALI Driver		✓			
Remote Tridonic basicDIM Driver				✓	Onyx One requires 2+ wired in series for basicDIM drivers
Onyx Wall Light					
Built-in Unios PC Driver	✓				
Remote Osram DALI		✓			
Orbit Plus Wall Light					
Built-in Unios PC Driver	✓				
Remote Tridonic One4All DALI Driver		✓			
Remote Tridonic basicDIM Driver				✓	
Orbit Wall Light					
Remote Tridonic basicDIM 24V Driver				✓	
Remote Non-Dim 24V Driver (CV2)			✓		4 control circuits possible per Casambi module
Remote PC 24V Driver (PC2)	✓				
Remote DALI / 1-10V 24V Driver		✓			
Ori Wall Light					
Built-in Unios Non-Dim Driver (Ori One)					Standard Ori One Driver is non-dim
Built-in Unios PC Driver (Ori Two/Three)	✓				
Remote Osram DALI Driver		✓			
Remote Tridonic basicDIM Driver				✓	Requires 5+ Ori wired in series (Ori Two + Ori Three, 5x Ori One etc)
Ovo Wall Light					
Remote Unios Non-Dim Driver					Ovo Wall Light standard driver is non-dimmable
Remote Osram DALI Driver		✓			Requires 3+ Ovo wired in series
Remote Tridonic basicDIM Driver				✓	Requires 5+ Ovo wired in series
Paragon Wall Light					
Built-in Unios PC Driver	✓				
Remote Tridonic One4All DALI Driver		✓			
Remote Tridonic basicDIM Driver				✓	
Tourmaline Wall Light					
Built-in Unios PC Driver	✓				
Remote Tridonic One4All DALI Driver		✓			
Remote Tridonic basicDIM Driver				✓	
Vega Surface Light					
Built-in Unios Non-Dim Driver					Standard Vega Outdoor Light Driver is non-dim
Remote Tridonic One4All DALI Driver		✓			
Remote Tridonic basicDIM Driver				✓	

Casambi Bluetooth Compatibility

Product Series & Driver	CBU-TED / BTPC0001	CBU-ASD / BTDA0001	CBU-PWM4 / BTPW0001	Built-In	Notes
Vespa Wall Light					
Built-in Unios PC Driver	✓				
Remote Tridonic One4All / Osram DALI Driver		✓			
Remote Tridonic basicDIM Driver				✓	Vespa Small requires 2+ wired in series for basicDIM drivers
Zenith Wall Light					
Built-in 24V Non-Dim DC-DC Constant Current Driver					DC-DC converter does not support dimming
Zeron Series					
Built-in Unios PC Driver	✓				
Remote Tridonic One4All / Osram DALI Driver		✓			
Remote Tridonic basicDIM Driver				✓	Mini Fixed One requires 2+ wired in series for basicDIM drivers
LINEAR					
Aeon Flex G2 Linear Series					
Remote Tridonic basicDIM 24V Driver				✓	
Remote Non-Dim 24V Driver (CV2)			✓		4 control circuits possible per Casambi module
Remote PC 24V Driver (PC2)	✓				
Remote DALI / 1-10V 24V Driver		✓			
Arrow Linear Light					
Built-in Unios PC Driver	✓				
Remote Tridonic One4All DALI Driver		✓			
Remote Tridonic basicDIM Driver				✓	
Cast Linear Light					
Built-in Tridonic Non-Dim Driver					Standard Cast Linear Driver is not dimmable
Built-in Tridonic One4All DALI Driver		✓			
Eclipse G2 Linear Series					
Remote Tridonic basicDIM 24V Driver				✓	
Remote Non-Dim 24V Driver (CV2)			✓		4 control circuits possible per Casambi module
Remote PC 24V Driver (PC2)	✓				
Remote DALI / 1-10V 24V Driver		✓			
LX Recessed Linear Light / R56,R75,R90					
Remote Tridonic Non-Dim Driver					Standard LX Driver is not dimmable
Remote Analogue 1-10V Dim Driver		✓			
Remote Tridonic DALI Driver		✓			
Remote Tridonic basicDIM Driver				✓	Up to 1700mm length sections (45W max)
LX Linear Light / S62/B62,578/B78					
Built-in Tridonic Non-Dim Driver					Standard LX Driver is not dimmable
Built-in Analogue 1-10V Dim Driver		✓			
Built-in Tridonic DALI Driver		✓			
LANDSCAPING					
Anchor Submersible Spotlight					
Built-in 24V Non-Dim DC-DC Constant Current Driver					DC-DC converter does not support dimming
Castell Bollard Light					
Built-in Unios PC Driver	✓				
Remote Tridonic DALI Driver		✓			Remote driver can be installed up to 15m from bollard light
Remote Tridonic basicDIM Driver				✓	Remote driver can be installed up to 15m from bollard light
Cluster Inground Uplight					
Built-in 24V Non-Dim DC-DC Constant Current Driver					DC-DC converter does not support dimming
Compass Adjustable Inground Uplight					
Built-in 24V Non-Dim DC-DC Constant Current Driver					DC-DC converter does not support dimming
Emerald Deck Light					
Built-in 24V Non-Dim DC-DC Constant Current Driver					DC-DC converter does not support dimming

Recommended 240V option for maximum control flexibility and installation. Recommended 24V DC options for maximum control flexibility and RGB(W) products.

Product Series & Driver	CBU-TED / BTPC0001	CBU-ASD / BTDA0001	CBU-PWM4 / BTPW0001	Built-In	Notes
Emerald Spike Spotlight					
Built-in 24V Non-Dim DC-DC Constant Current Driver					DC-DC converter does not support dimming
Emerald Spotlight					
Built-in Unios PC Driver	✓				
Remote Tridonic DALI Driver		✓			
Remote Tridonic basicDIM Driver				✓	
Evio Bollard Light					
Built-in Unios Non-Dim Driver					Standard Evio Bollard Light driver is not dimmable
Remote Tridonic DALI Driver		✓			Remote driver can be installed up to 15m from bollard light
Remote Tridonic basicDIM Driver				✓	Remote driver can be installed up to 15m from bollard light
Kepler Pathway Light					
Built-in 24V Non-Dim DC-DC Constant Current Driver					DC-DC converter does not support dimming
Kepler Spike Light					
Built-in 24V Non-Dim DC-DC Constant Current Driver					DC-DC converter does not support dimming
Pilot Handrail Series					
Built-in 24V Non-Dim DC-DC Constant Current Driver					DC-DC converter does not support dimming
Radius Pathway Light					
Built-in 24V Non-Dim DC-DC Constant Current Driver					DC-DC converter does not support dimming
Spectrum Spike Light					
Remote Tridonic basicDIM 24V Driver				✓	
Remote Non-Dim 24V Driver (CV2)			✓		4 control circuits possible per Casambi module
Remote PC 24V Driver (PC2)	✓				
Remote DALI / 1-10V 24V Driver		✓			

Unios HQ (Australia)

T +61 8 9248 1888
E sales@unios.com
37 Boom Street,
Gnangara WA 6077

Sydney, Australia

T +61 8 9248 1888
E sydney@unios.com
103/13 Bowden Street,
Alexandria NSW 2015

Melbourne, Australia

T +61 8 9248 1888
E melbourne@unios.com
270-274 Nicholson Street,
Fitzroy VIC 3065

Singapore

T +65 9040 3034
E singapore@unios.com
7030 Ang Mo Kio Ave 5, Unit 08-31
Northstar @ AMK, Singapore 559880

Ho Chi Minh, Vietnam

T +84 28 3821 2927
E vietnam@unios.com
B2, tháp Canary, Đảo Kim
Cương, Quận 2, Hồ Chí Minh

Hanoi, Vietnam

T +84 28 3821 2927
E vietnam@unios.com
E2 - Chelsea Residence, 48 Trần Kim
Xuyến, Yên Hòa, Cầu Giấy, Hà Nội

Zhongshan, China

T +86 (760) 8851 8920
E china@unios.com
No.3 , FuTian 5 Road, Gangkou
District, Zhongshan City

Gyeonggido, South Korea

T +82 31 791 3922
E southkorea@unios.com
1038 Dadong, Hyundai Knowledge
Industry Center, 520 Misadaero, Hanamsi